
HP 83491/2/3A
Clock Recovery Modules



© Copyright Hewlett-Packard Company 1999
All Rights Reserved. Reproduction, adaptation, or translation without prior written permission is prohibited, except as allowed under copyright laws.

HP Part No. 83491-90011
Printed in USA
June 1999

Hewlett-Packard Company
Lightwave Division
1400 Fountaingrove Parkway
Santa Rosa, CA 95403-1799,
USA
(707) 577-1400

Notice.

The information contained in this document is subject to change without notice. Companies, names, and data used in examples herein are fictitious unless otherwise noted. Hewlett-Packard makes no warranty of any kind with regard to this material, including but not limited to, the implied warranties of merchantability and fitness for a particular purpose. Hewlett-Packard shall not be liable for errors contained herein or for incidental or consequential damages in connection with the furnishing, performance, or use of this material.

Restricted Rights Legend.

Use, duplication, or disclosure by the U.S. Government is subject to restrictions as set forth in subparagraph (c) (1) (ii) of the Rights in Technical Data and Computer Software clause at DFARS 252.227-7013 for DOD agencies, and subparagraphs (c) (1) and (c) (2) of the Commercial Computer Software Restricted Rights clause at FAR 52.227-19 for other agencies.

Warranty.

This Hewlett-Packard instrument product is warranted against defects in material and workmanship for a period of one year from date of shipment. During the warranty period, Hewlett-Packard Company will, at its option, either repair or replace products which prove to be defective. For warranty service or repair, this product must be returned to a service facility designated by Hewlett-Packard. Buyer shall prepay shipping charges to Hewlett-Packard and Hewlett-Packard shall pay shipping charges to return the product to Buyer. However, Buyer shall pay all shipping charges, duties, and taxes for products returned to Hewlett-Packard from another country.

Hewlett-Packard warrants that its software and firmware designated by Hewlett-Packard for use with an instrument will execute its programming instructions when properly installed on that instrument. Hewlett-Packard does not warrant that the operation of the instrument, or software, or firmware will be uninterrupted or error-free.

Limitation of Warranty.

The foregoing warranty shall not apply to defects resulting from improper or inadequate maintenance by Buyer, Buyer-supplied software or interfacing, unauthorized modification or misuse, operation outside of the environmental specifications for the product, or improper site preparation or maintenance.

No other warranty is expressed or implied. Hewlett-Packard specifically

disclaims the implied warranties of merchantability and fitness for a particular purpose.

Exclusive Remedies.

The remedies provided herein are buyer's sole and exclusive remedies. Hewlett-Packard shall not be liable for any direct, indirect, special, incidental, or consequential damages, whether based on contract, tort, or any other legal theory.

Safety Symbols.

CAUTION

The *caution* sign denotes a hazard. It calls attention to a procedure which, if not correctly performed or adhered to, could result in damage to or destruction of the product. Do not proceed beyond a caution sign until the indicated conditions are fully understood and met.

WARNING

The *warning* sign denotes a hazard. It calls attention to a procedure which, if not correctly performed or adhered to, could result in injury or loss of life. Do not proceed beyond a warning sign until the indicated conditions are fully understood and met.



The instruction manual symbol. The product is marked with this warning symbol when it is necessary for the user to refer to the instructions in the manual.



The laser radiation symbol. This warning symbol is marked on products which have a laser output.



The AC symbol is used to indicate the required nature of the line module input power.



The ON symbols are used to mark the positions of the instrument power line switch.



The OFF symbols are used to mark the positions of the instrument power line switch.



The CE mark is a registered trademark of the European Community.



The CSA mark is a registered trademark of the Canadian Standards Association.



The C-Tick mark is a registered trademark of the Australian Spectrum Management Agency.

ISM1-A

This text denotes the instrument is an Industrial Scientific and Medical Group 1 Class A product.

General Safety Considerations

WARNING

Light energy can radiate from the front panel Output connectors on HP 83492A and HP 83493A modules. The light emitted from these connectors is the slightly attenuated light that is input to the front-panel Input connector.

WARNING

If this instrument is not used as specified, the protection provided by the equipment could be impaired. This instrument must be used in a normal condition (in which all means for protection are intact) only.

WARNING

NO OPERATOR SERVICEABLE PARTS INSIDE. Refer servicing to qualified Hewlett-Packard personnel. To prevent electrical shock, do not remove covers.

CAUTION

This product is designed for use in INSTALLATION CATEGORY II and POLLUTION DEGREE 2, per IEC 1010 and 664 respectively.

CAUTION

Electrostatic discharge (ESD) on or near input connectors can damage circuits inside the instrument. Repair of damage due to misuse is *not* covered under warranty. Before connecting any cable to the electrical input, momentarily short the center and outer conductors of the cable together. Personnel should be properly grounded, and should touch the frame of the instrument before touching any connector.

This product has been designed and tested in accordance with IEC Publication 1010, Safety Requirements for Electronic Measuring Apparatus, and has been supplied in a safe condition. The instruction documentation contains information and warnings which must be followed by the user to ensure safe operation and to maintain the product in a safe condition.

General Safety Considerations

Contents

General Safety Considerations iii

1 Installation

Installation 1-2

2 Operation

HP 83491/2/3A Modules—at a glance 2-2

Front-Panel Features 2-4

Block Diagrams 2-7

To display a signal 2-8

To compensate for module insertion loss 2-9

Using Probes with an HP 83491A 2-10

3 Specifications and Regulatory Information

HP 83491A Specifications 3-3

HP 83492A Specifications 3-4

HP 83493A Specifications 3-6

HP 83491/2/3A Operating Specifications 3-7

Declaration of Conformity 3-8

4 Reference

Front-Panel Optical Adapters 4-2

In Case of Difficulty 4-3

Error Messages 4-5

Electrostatic Discharge Information 4-8

Cleaning Connections for Accurate Measurements 4-10

Returning the Module for Service 4-21

Hewlett-Packard Sales and Service Offices 4-24

Contents

To install the module 1-3

To connect cables to an HP 83492A 1-7

Installation

Installation

HP 83491/2/3A modules require that firmware revision A.06.25 or later be installed in the HP 83480A. If you wish to install the module in an HP 54750A digitizing oscilloscope, you must first install the HP 83480K communications firmware upgrade kit.

To check the HP 83480A's firmware revision code

- 1 Press the Utility key and then the *System config* softkey.
- 2 The firmware revision number is listed under the Frame section of the display.

CAUTION

Fiber-optic connectors are easily damaged when connected to dirty or damaged cables and accessories. The HP 83492A and HP 83493A front-panel input connectors are no exception. When you use improper cleaning and handling techniques, you risk expensive instrument repairs, damaged cables, and compromised measurements. Before you connect any fiber-optic cable to an HP 83492A or HP 83493A module, [refer to “Cleaning Connections for Accurate Measurements” on page 4-10.](#)

CAUTION

The circuits on electrical inputs and outputs can be damaged by electrostatic discharge (ESD). Therefore, avoid applying static discharges to any front or rear-panel electrical connector. Before connecting any coaxial cable to a front-panel connector, momentarily short the center and outer conductors of the cable together. Avoid touching the front-panel connectors without first touching the frame of the instrument. Be sure that the instrument is properly earth-grounded to prevent buildup of static charge. [Refer to “Electrostatic Discharge Information” on page 4-8.](#)

To install the module

- 1 Verify that all system components ordered have arrived by comparing the shipping forms to the original purchase order. Inspect all shipping containers. The shipment includes:
 - ❑ An HP 83491/2/3A Clock Recovery Module
 - ❑ Fiber-optic adapter cable (*HP 83492/3A module only*)
 - ❑ Two RF adapter cables (*HP 83491A module only*)
 - ❑ *HP 83491/2/3A Clock Recovery Modules User's Guide (this book)*

If your shipment is damaged or incomplete, save the packing materials and notify both the shipping carrier and the nearest Hewlett-Packard Sales and Service office. HP will arrange for repair or replacement of damaged or incomplete shipments without waiting for a settlement from the transportation company. Notify the HP customer engineer of any problems.

- 1 Make sure that the serial number listed on the module's rear-panel label matches the serial number listed on the shipping document.

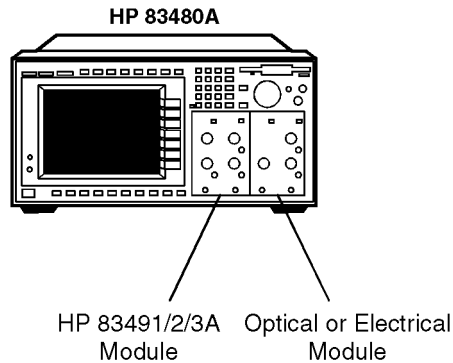


Figure 1-1. Serial number label

- 2 Install the HP 83491/2/3A module into the HP 83480A mainframe's left slot. Finger-tighten the knurled screw on the front panel of the plug-in module to ensure that the module is securely seated in the mainframe.

NOTE

Installing the module into the left slot ensures that the supplied adapter cable will fit. See [Figure 1-2](#).



setupb.cdr

Figure 1-2. Position of modules in the mainframe

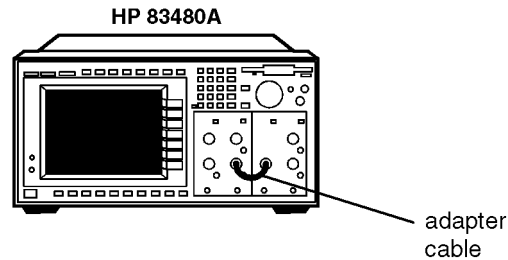
- 3 Clean all optical interfaces as described in [“Cleaning Connections for Accurate Measurements”](#) on page 4-10, before making measurements.
- 4 Perform the following steps if you’re installing an HP 83492/3A module:
 - a Unscrew and remove the fiber-optic adapter that is located on the optical module’s front-panel optical input connector.
 - b Connect the adapter that was removed in the previous step onto the HP 83492/3A module’s front-panel Input connector.

On HP 83492A module’s, the input connector used depends on the wavelength of the input signal. Refer to [“To connect cables to an HP 83492A”](#) on page 1-7.
- 5 Connect the supplied adapter cable as shown in [Figure 1-3](#).

WARNING

Light energy can radiate from the front panel Output connectors on HP 83492A and HP 83493A modules. The light emitted from these connectors is the slightly attenuated light that is input to the front-panel Input connector.

- 6 Turn on the HP 83480A, and connect a modulated signal to the HP 83491/2/3A module’s Input connector.



settpa.cdr

Figure 1-3. The adapter cable

CAUTION

HP 83491A Modules: Maximum safe signal input level is $\pm 5V$. The input circuits can also be damaged by electrostatic discharge (ESD). Before connecting any coaxial cable to the connectors, momentarily short the center and outer conductors of the cable together. Avoid touching the front-panel input connectors without first touching the frame of the instrument. Be sure that the instrument is properly earth-grounded to prevent buildup of static charge.

CAUTION

HP 83492/3A Modules: Maximum safe signal input level is +3 dBm.

- 7 On the HP 83480A, press the Trigger key and then the *Source* softkey. Then, select *trigger 2* (the HP 83491/2/3A module) for the trigger source.
- 8 On the HP 83491/2/3A module, repeatedly press the SELECT key until a front-panel light indicates the data rate of the signal. See [Figure 1-4 on page 1-6](#).

Green and red data-rate lights

The data-rate indicator lights change color between red and green to show which data rate is selected. A red light does *not* indicate a problem. A red light shows that the adjacent red data rate label is selected. A green light shows that the adjacent green data rate label is selected. Repeatedly pressing the SELECT key cycles through the selections in one color before switching to the opposite color. On HP 83491A modules for example, the first selection cycle shows 155 Mb/s selected. The second section cycle shows 1062 Mb/s selected.

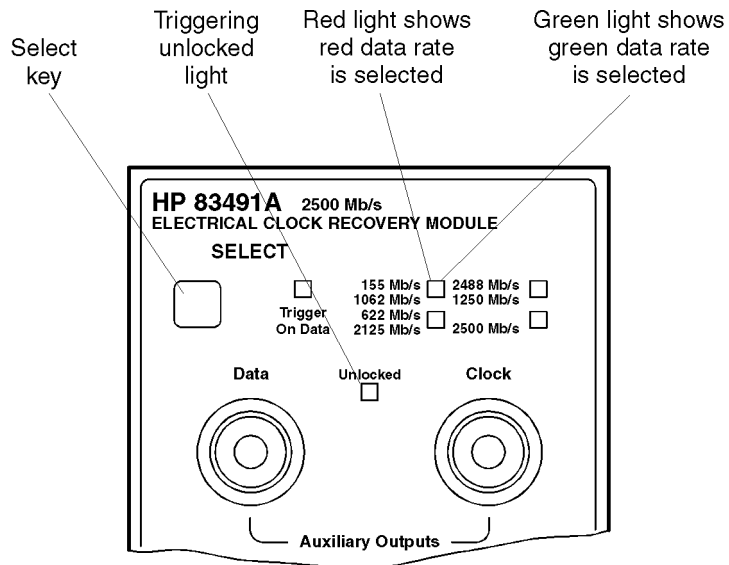


Figure 1-4. Front-panel lights

- 9 Confirm that the Unlocked light is off.
- 10 Observe the Clock and Data outputs on an oscilloscope. Waveforms should be present. The instrument is now ready for you to begin making measurements.

To connect cables to an HP 83492A

On HP 83492A modules, the front-panel fiber-optic connectors reverse input and output roles depending on the wavelength of the signal. Signals in the 750 nm to 860 nm wavelength range are input to the left connector and output from the right connector. Signals in the 1000 nm to 1600 nm wavelength range are input to the right connector and output from the left connector.

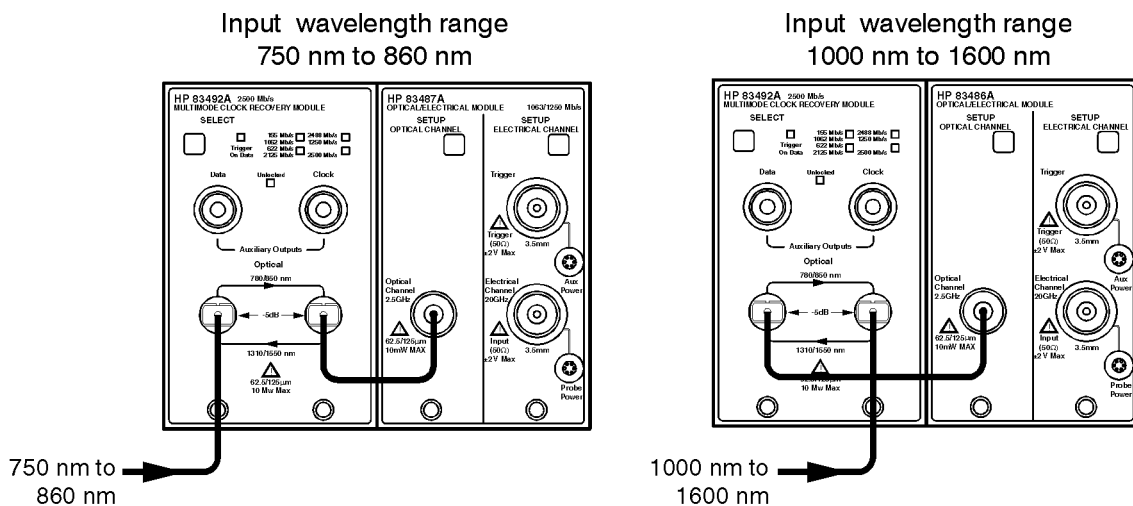


Figure 1-5. Input and output connections versus wavelength

inoutcon.cdr

Installation
Installation

HP 83491/2/3A Modules—at a glance	2-2
Front-Panel Features	2-4
Block Diagrams	2-7
To display a signal	2-8
To compensate for module insertion loss	2-9
Using Probes with an HP 83491A	2-10
To compensate for a passive probe	2-11
To compensate an HP 54701A active probe	2-11
To compensate for other devices	2-11

Operation

HP 83491/2/3A Modules—at a glance

The HP 83491/2/3A Clock Recovery Modules are designed to operate in an HP 83480A Digital Communications Analyzer. These modules recover clock and data information at standard telecom and datacom rates. The resulting trigger signal is made available to the HP 83480A mainframe via a connector located on the module's rear-panel. An external front-panel cable passes the data signal, with some insertion loss, to the receiver module.

Table 2-1. Module Features

Module	Input Connector	Selectable Rates (Mb/s)
HP 83491A	50 Ω electrical	155, 622, 1060, 1250, 2120, 2488, 2500
HP 83492A	Multimode fiber (62.5/125 μ m)	155, 622, 1060, 1250, 2120, 2488, 2500
HP 83493A	Single-mode fiber (9/125 μ m)	155, 622, 1250, 2488, 2500

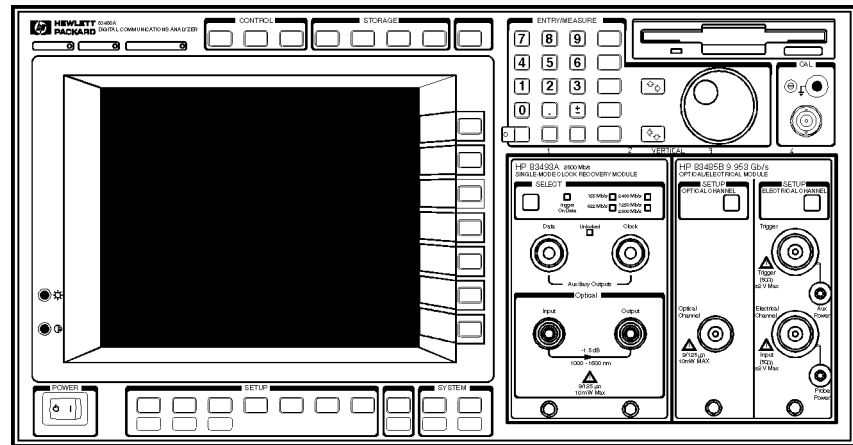


Figure 2-1. An HP 83493A installed in an HP 83480A mainframe

WARNING

Light energy can radiate from the front panel Output connectors on HP 83492A and HP 83493A modules. The light emitted from these connectors is the slightly attenuated light that is input to the front-panel Input connector.

Use with HP 71603B or HP 71612B Error Performance Analyzers

The front-panel Data and Clock outputs provide electrical recovered clock and regenerated data signals for simultaneous testing with other instruments, such as the HP 71603B or HP 71612B error performance analyzers.

Multimode module and single-mode reference receivers

HP does *not* recommend using the HP 83492A multimode module with single-mode reference receivers such as the HP 83481A, HP 83482A, or HP 83485A,B modules. Connecting multimode to single-mode fibers causes large reflections and insertion loss because of the reduction of the optical fiber's core from 62.5 μm to 9 μm .

Single-mode module and multimode reference receivers

It is acceptable to use an HP 83493A single-mode module with a multimode reference receiver such as the HP 83486A module. This is true provided that single-mode fiber is connected to the HP 83493A module's front-panel Input connector.

What you won't find on these modules . . .

Unlike other modules designed to be used with the HP 83480A digital communications analyzer, the HP 83491/2/3A modules do not include Channel keys or menus. Also, there are no GPIB programming commands for these modules.

Front-Panel Features

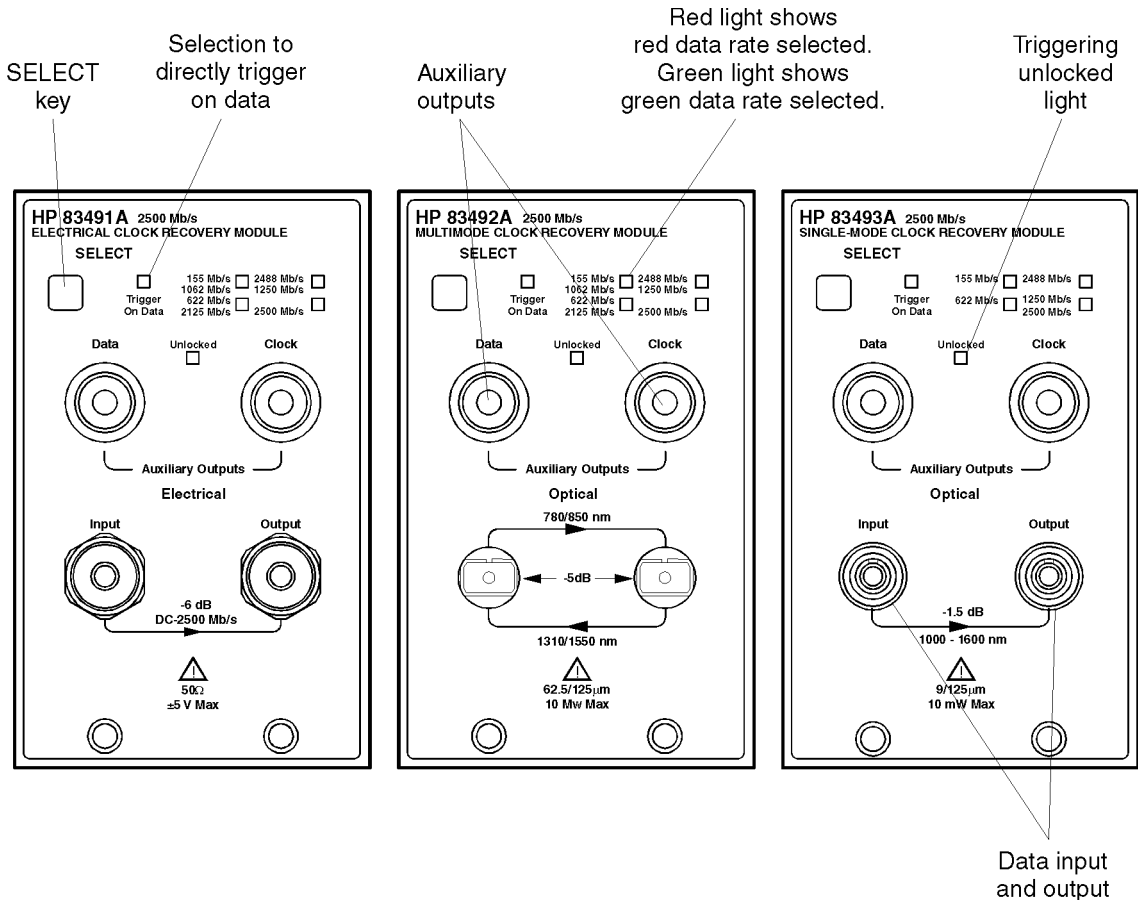


Figure 2-2. HP 83491/2/3A front panels

SELECT key

Pressing this key changes the modulation rate of the input signal. The recovered and retimed clock trigger is sent to the mainframe. The Trigger On Data selection is a bypass mode where the data stream directly triggers the mainframe. Refer to “Block Diagrams” on page 2-7 to view a schematic of the normal and bypass paths.

Green and red data-rate lights

The data-rate indicator lights change color between red and green to show which data rate is selected. A red light does *not* indicate a problem. A red light shows that the adjacent red data rate label is selected. A green light shows that the adjacent green data rate label is selected. Repeatedly pressing the SELECT key cycles through the selections in one color before switching to the opposite color. On HP 83491A modules for example, the first selection cycle shows 155 Mb/s selected. The second section cycle shows 1062 Mb/s selected.

UNLOCKED indicator

This light shows when clock recovery cannot be established on the signal. If a clock rate is selected, the trigger output to the mainframe *is* disabled to prevent free-run triggering. However in bypass mode (Trigger On Data selected), triggering is *not* disabled. When the UNLOCKED light is on, you can establish a trigger on the data input to the reference receiver.

Auxiliary outputs

DATA connector: This connector provides a fully regenerated version of the input signal. It is intended for monitoring purposes only and *not* for rigorous eye mask compliance testing. The frequency response does not conform to the requirements for eye mask testing as described in ITU-T G.957 and Bellcore GR-253-CORE. On HP 83492A and HP 83493A modules, this port is amplitude stabilized for input signals greater than approximately -23 dBm.

CLOCK connector: This connector provides the recovered clock signal. You can use this signal to measure jitter transfer, because this output can track and follow input data with very fast jitter; it has a wide bandwidth jitter transfer function when compared to the recovered clock signal which is routed through a rear-panel connector to the mainframe for triggering. Note that the CLOCK Auxiliary Output remains synchronized to input signals several dB below the onset of errors at the DATA Auxiliary Output.

Input and Output connectors

The input connectors pass the digitally modulated signal to the receiver module. The input signal, slightly attenuated and available at the Output connector, is connected to the input of any of the HP 83481,2,3,4,5,6, or 7 modules. The connectors on optical modules include adapters which can easily be changed to match the type of connectors that are used on your fiber-optic cables. Refer to “Front-Panel Optical Adapters” on page 4-2 for a description of the available adapters.

Front-Panel Features

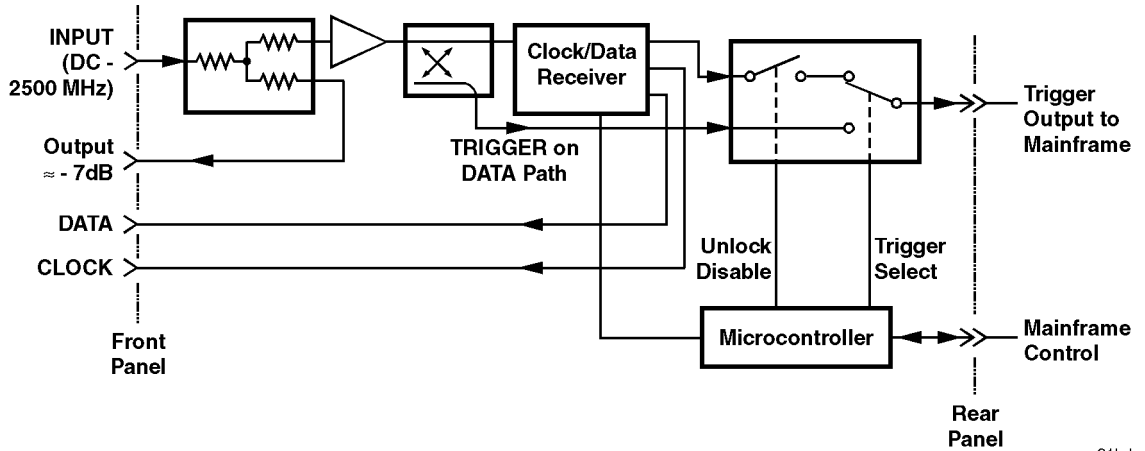
Multimode and single-mode connections

HP 83492A modules use multimode fiber. Connecting the output to the Optical Input connector on HP 83481/2/5 single-mode modules results in large reflections and insertion loss.

HP 83493A modules use 9/125 μm single-mode fiber. Connecting multimode fiber to the Optical Input connector results in large reflections and insertion loss.

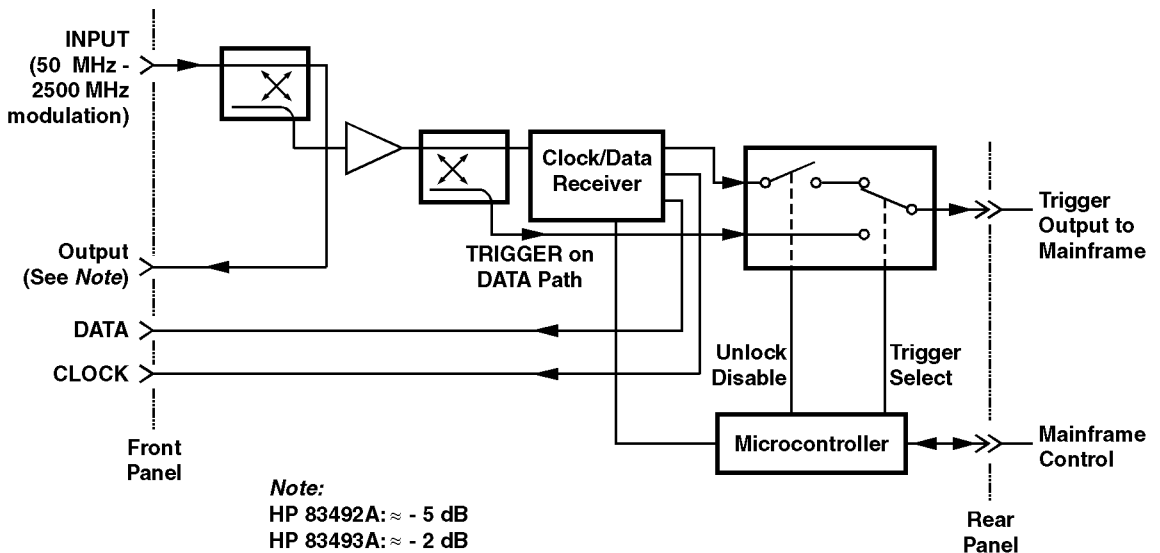
Recovered Clock The recovered clock signal is routed directly to the HP 83480A mainframe through the module's rear panel. This output has a lower jitter modulation bandwidth than the front-panel CLOCK Auxiliary Output. Because of the reduced jitter modulation bandwidth on the mainframe trigger signal, a more complete view of the jitter on the waveform data is obtained.

Block Diagrams



91bd

Figure 2-3. HP 83491A Block Diagram



93bd

Figure 2-4. HP 83492A and HP 83493A Block Diagram

To display a signal

- 1 Install the module as described in [“To install the module” on page 1-3](#). Be sure to connect all of the cables as described in the procedure.
- 2 Repeatedly press the SELECT key on the clock recovery module until the front-panel light indicates the proper data rate of the signal.

Green and red data-rate lights

The data-rate indicator lights change color between red and green to show which data rate is selected. A red light does *not* indicate a problem. A red light shows that the adjacent red data rate label is selected. A green light shows that the adjacent green data rate label is selected. Repeatedly pressing the SELECT key cycles through the selections in one color before switching to the opposite color. On HP 83491A modules for example, the first selection cycle shows 155 Mb/s selected. The second section cycle shows 1062 Mb/s selected.

- If the UNLOCKED light is on, clock recovery cannot be established on the signal.
- Avoid selecting a data rate that is a multiple of the input signal. For example, don't select a 622 Mb/s data rate if the signal is really at 155 Mb/s.
- If you cannot get the clock recovery module to lock on the signal, make sure that you have selected the correct data rate and that the HP 83480A (or HP 54750A) mainframe trigger level is adjusted appropriately.
- Signals displayed using a data trigger are less reliable than using a recovered clock. Signals triggered on data can also vary depending upon the trigger level.

To compensate for module insertion loss

The following steps allow you to enter an offset to compensate for the insertion loss of the clock recovery module. This provides accurate amplitude measurements at the input to the clock recovery module.

- 1** Disconnect the cable from the clock recovery module's Input connector.
- 2** Measure the signal using a power meter. You can use either the HP 83480A's built-in power meter or an external power meter.
- 3** Reconnect the cable to the clock recovery module.
- 4** Disconnect the cable from the reference receiver module's input connector.
- 5** Measure the signal using a power meter. You can use either the HP 83480A's built-in power meter or an external power meter.
- 6** Subtract the two measurements to determine the insertion loss of the module.
Insertion loss: _____
- 7** On the *reference receiver module*, press the front-panel channel SETUP key.
- 8** Press *External scale*, and set the *Atten units* to "decibel".
- 9** Press *Attenuation*, and enter the value calculated in [Step 6](#).

Using Probes with an HP 83491A

You can use external passive and active probes with the HP 83491A electrical clock recovery module. The procedures in this section generate vertical scale factors. These factors are applied to the calibration of the reference receiver module's electrical channel. When selecting a probe, keep in mind that the input impedance of the HP 83491A is 50Ω .

If the probe being calibrated has an attenuation factor that allows the instrument to adjust the gain to produce even steps in the vertical scale factors, the instrument will do so. Typically, probes have standard attenuation factors such as divide by 10, divide by 20, or divide by 100.

Because the following procedures include compensation for insertion loss of the clock recovery module, do not perform the procedure [“To compensate for module insertion loss”](#) on page 2-9.

The following probes are available for use with HP 83491A clock recovery modules:

- **HP N1020A TDR probe.** This passive probe (1:1, 50Ω) provides a fixture for positioning and holding the probe tip on the device being tested.
- **HP 54701A 2.5 GHz active probe.** This is a $100k\Omega$, 10:1, probe.
- **HP 54006A 6 GHz handheld low-impedance probe.** This passive probe (10:1, 500Ω , 20:1, $1k\Omega$) has an input capacitance of 0.25 pf.
- **HP 1163A 1 GHz resistive-divider probe.** This passive 500Ω probe has an input capacitance of 1.5 pf.

To compensate for a passive probe

- 1 Connect the probe to the Input connector on the HP 83491A clock recovery module.
- 2 Attach the probe tip to the CAL hook that is located near the floppy disk drive.
- 3 Press the *reference receiver module's* front-panel channel SETUP key.
- 4 Press *Calibrate* and then *Calibrate probe*.

To compensate an HP 54701A active probe

- 1 Connect the HP 83491A output to the electrical measurement channel input.
- 2 Connect the probe to the Input connector on the HP 83491A clock recovery module.
- 3 Connect the probe power cable to the Probe Power connector on the reference receiver module.
- 4 Attach the probe tip to the CAL hook that is located near the floppy disk drive.
- 5 Press the *reference receiver module's* front-panel channel SETUP key.
- 6 Press *Calibrate* and then *Calibrate probe*.

To compensate for other devices

The information in this section applies to both optical and electrical measurements. Since the mainframe's CAL signal is a voltage source, it cannot be used to calibrate to the probe tip when the units are set to Ampere, Watt, or Unknown. Instead, set the external gain and external offset to compensate for the actual characteristics of the device. If you do not know the actual characteristics, you can refer to the typical specifications that came with the device.

- 1 Press the reference receiver module's front-panel channel SETUP key.
- 2 Press *External scale*.
- 3 Press *Atten units* Ratio, *Attenuation* 1:1, and then *Units* Ampere (Volt, Watt, or Unknown).

Operation

Using Probes with an HP 83491A

- 4 Press *Ext gain*, and enter the actual gain characteristics of the device.
- 5 Press *Ext offset*, and enter the offset introduced by the device.

HP 83491A Specifications 3-3
HP 83492A Specifications 3-4
HP 83493A Specifications 3-6
HP 83491/2/3A Operating Specifications 3-7
Declaration of Conformity 3-8

Specifications and Regulatory Information

Specifications and Regulatory Information

This chapter lists specifications and characteristics of the HP 83491/2/3A Clock Recovery Modules. Specifications apply over the temperature range +15°C to +35°C (unless otherwise noted) after the instrument's temperature has been stabilized after 60 minutes of continuous operation.

- Specifications** *Specifications* described warranted performance.
- Characteristics** *Characteristics* provide useful, nonwarranted, information about the functions and performance of the instrument. *Characteristics are printed in italics.*
- Calibration cycle** HP warrants instrument specifications over the recommended calibration interval. To maintain specifications, periodic recalibrations are necessary. We recommend that the HP 83491/2/3A Clock Recovery Modules be calibrated at an HP service facility every 24 months.

HP 83491A Specifications

Table 3-1. HP 83491A Specifications

Clock recovery rates (NRZ coding)	
155.52 Mb/s	±0.1%
622.08 Mb/s	±0.1%
1062.50 Mb/s	±0.1%
1250 Mb/s	±0.1%
2125.00 Mb/s	±0.1%
2488.32 Mb/s	±0.1%
2500.00 Mb/s	±0.1%
<i>Data triggering (characteristic)</i>	<i>50 Mb/s to 2500 Mb/s</i>
Operating input power level ^{a b}	
Triggering operation, all rates	–10 dBm to 3 dBm
10 ^{–10} BER, all rates ^c	–10 dBm to 3 dBm
Insertion loss (through path)	
DC through 2500 MHz	≤ 7 dB
Output jitter, all rates ^d	0.0125 UI _{rms}
<i>Maximum continuous electrical power before damage (characteristic)</i>	<i>1W peak</i>
<i>DATA and CLOCK output amplitude, all rates (characteristic)</i>	<i>0.5Vp-p</i>
<i>INPUT electrical return loss</i>	
<i>DC through 1250 MHz (characteristic)</i>	<i>≥ 20 dB</i>
<i>1250 MHz through 2500 MHz (characteristic)</i>	<i>≥ 15 dB</i>
<i>DATA and CLOCK electrical return loss</i>	
<i>50 MHz through 2000 MHz (characteristic)</i>	<i>≥ 10 dB</i>
<i>2000 MHz through 2500 MHz (characteristic)</i>	<i>≥ 6 dB</i>

a. Source extinction ratio ≥ 8.2 dB when measured per TIA/EIA OFSTP-4A.

b. Operating power level applies over temperature range 25°C ± 5°.

c. Better than 10^{–10} BER when tested with PRBS 2²³–1 pattern.

d. Measured on an oscilloscope eye diagram with PRBS 2²³–1 test pattern.

HP 83492A Specifications

Table 3-2. HP 83492A Specifications

<i>Wavelength range (characteristic)</i>	<i>750 nm to 860 nm and 1000 nm to 1600 nm</i>
<i>Optical INPUT and OUTPUT fiber (characteristic)</i>	<i>62.5/125 multimode</i>
Optical insertion loss (through path) ^a	
750 nm to 860 nm	≤ 5.0 dB
1000 nm to 1600 nm	≤ 5.0 dB
Optical return loss ^b	≥ 28 dB
Clock recovery rates (NRZ coding)	
155.52 Mb/s	±0.1%
622.08 Mb/s	±0.1%
1062.50 Mb/s	±0.1%
1250 Mb/s	±0.1%
2125.00 Mb/s	±0.1%
2488.32 Mb/s	±0.1%
2500.00 Mb/s	±0.1%
<i>Data triggering (characteristic)</i>	<i>50 Mb/s to 2500 Mb/s</i>
Operating input power level ^{c d}	
750 nm to 860 nm	
Triggering operation, all rates	–10 dBm to 3 dBm
10 ⁻¹⁰ BER, all rates ^e	–10 dBm to 3 dBm
1000 nm to 1600 nm	
Triggering operation, all rates	–13 dBm to 3 dBm
10 ⁻¹⁰ BER, all rates ^f	–13 dBm to 3 dBm
Output jitter, all rates ^g	0.0125 UI _{rms}
<i>Maximum continuous optical power before damage (characteristic)</i>	<i>10 mW peak</i>
<i>DATA and CLOCK output amplitude, all rates (characteristic)</i>	<i>0.5Vp-p</i>
<i>DATA and CLOCK electrical return loss</i>	
<i>50 MHz through 2000 MHz (characteristic)</i>	≥ 10 dB
<i>2000 MHz through 2500 MHz (characteristic)</i>	≥ 6 dB

- a. Minimum loss in 850 nm window.
- b. Single-mode backreflection tested with FC/PC adapter and single-mode fiber. Optical output terminated with > 33 dB return loss. Return loss with fully filled 62.5 μm core multimode fiber may be slightly lower.
- c. Source extinction ratio ≥ 8.2 dB when measured per TIA/EIA OFSTP-4A.
- d. Operating power level applies over temperature range $25^\circ\text{C} \pm 5^\circ$.
- e. Better than 10^{-10} BER when tested with PRBS $2^{23}-1$ pattern.
- f. Better than 10^{-10} BER when tested with PRBS $2^{23}-1$ pattern.
- g. Measured on an oscilloscope eye diagram with PRBS $2^{23}-1$ test pattern.

HP 83493A Specifications

Table 3-3. HP 83493A Specifications

<i>Wavelength range (characteristic)</i>	<i>1000 nm to 1600 nm</i>
<i>Optical INPUT fiber (characteristic)</i>	<i>9/125 single mode</i>
Optical insertion loss (through path)	≤ 1.5 dB
Optical return loss ^a	≥ 28 dB
Clock recovery rates (NRZ coding)	
155.52 Mb/s	±0.1%
622.08 Mb/s	±0.1%
1250 Mb/s	±0.1%
2488.32 Mb/s	±0.1%
2500.00 Mb/s	±0.1%
<i>Data triggering (characteristic)</i>	<i>50 Mb/s to 2500 Mb/s</i>
Operating input power level ^{b c}	
Triggering operation, all rates	–20 dBm to 3 dBm
10 ^{–10} BER, all rates ^d	–17 dBm to 3 dBm
Output jitter, all rates ^e	0.0125 UI _{rms}
<i>Maximum continuous optical power before damage (characteristic)</i>	<i>10 mW peak</i>
<i>DATA and CLOCK output amplitude, all rates (characteristic)</i>	<i>0.5Vp-p</i>
<i>DATA and CLOCK output electrical return loss</i>	
50 MHz through 2000 MHz (characteristic)	≥ 10 dB
2000 MHz through 2500 MHz (characteristic)	≥ 6 dB

a. Tested with FC/PC adapter. Optical output terminated without > 33 dB return loss.

b. Source extinction ratio ≥ 8.2 dB when measured per TIA/EIA OFSTP-4A.

c. Operating power level applies over temperature range 25°C ± 5°.

d. Better than 10^{–10} BER when tested with PRBS 2²³–1 pattern.

e. Measured on an oscilloscope eye diagram with PRBS 2²³–1 test pattern.


HP 83491/2/3A Operating Specifications

Table 3-4. HP 83491/2/3A Operating Specifications

Use	Indoor
Temperature	
Operating	0°C to +55°C
Non-operating	-40°C to +70°C
Altitude	
Operating	4600 m (15,000 ft)
Non-operating	15,300 m (50,000 ft)
Humidity	
Operating	up to 90% relative humidity at <35°C
Non-operating	up to 90% relative humidity at <35°C
Net weight	approximately 1.2 kg (2.6 lb.)
Shipping weight	approximately 2.1 kg (4.6 lb.)
Power Requirements	Supplied by mainframe

Declaration of Conformity

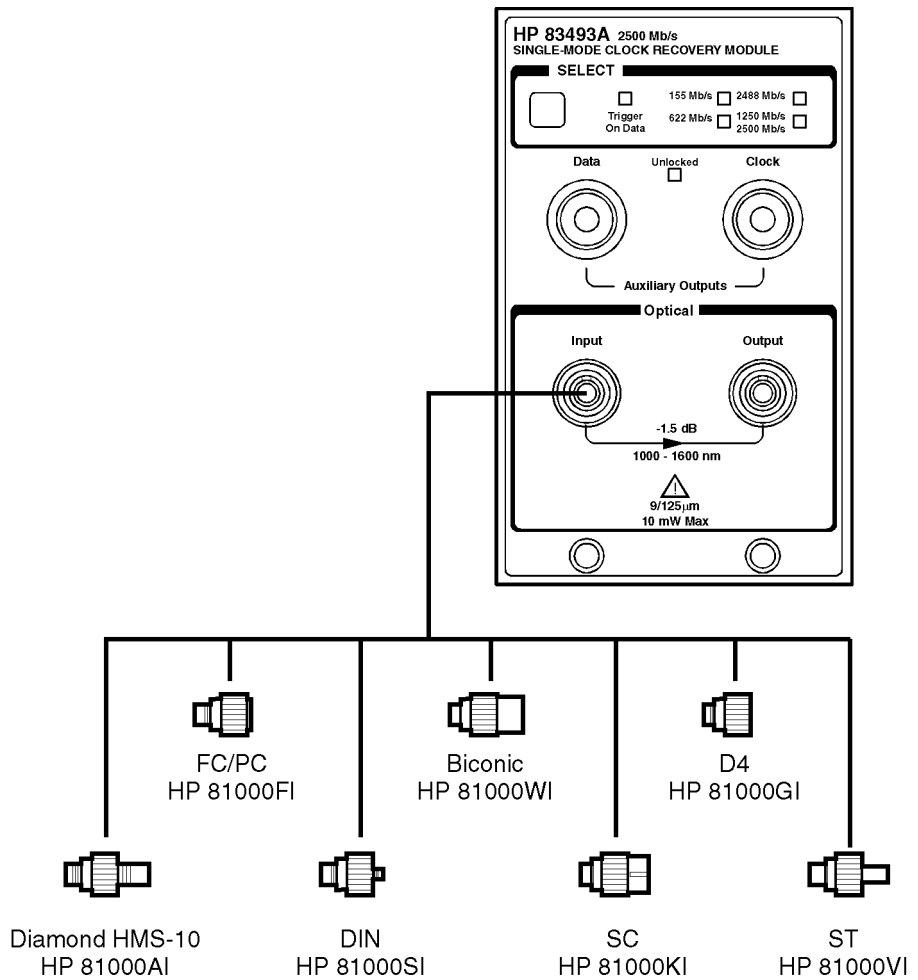
Declaration of Conformity

DECLARATION OF CONFORMITY <small>According to ISO/IEC Guide 22 and EN 45014</small>	
Manufacturer's Name:	Hewlett-Packard Co.
Manufacturer's Address:	1400 Fountaingrove Parkway Santa Rosa, CA 95403-1799 USA
Declares that the product:	
Product Name:	Clock Recovery/Trigger Module
Model Number:	HP 83491A, HP 83492A, HP 83493A
Product Options:	This declaration covers all options of the above product.
Conforms to the following product specifications:	
Safety: IEC 61010-1:1990 / EN 61010-1:1993 CAN/CSA-C22.2 No. 1010.1-92	
EMC: CISPR 11:1990/EN 55011:1991 Group 1, Class A IEC 801-2:1984/EN 50082-1:1992 4 kV CD, 8 kV AD IEC 801-3:1984/EN 50082-1:1992 3 V/m, 27-500 MHz IEC 801-4:1988/EN 50082-1:1992 0.5 kV sig. lines, 1 kV power lines	
Supplementary Information:	
The product herewith complies with the requirements of the Low Voltage Directive 73/23/EEC and the EMC Directive 89/336/EEC and carries the CE-marking accordingly.	
Santa Rosa, CA, USA	June 10, 1999  Greg Pfeiffer/Quality Engineering Manager
<small>European Contact: Your local Hewlett-Packard Sales and Service Office or Hewlett-Packard GmbH Department HQ-TRE, Herrenberger Strasse 130, D71034 Boblingen, Germany (FAX +49-7031-14-3143)</small>	

Front-Panel Optical Adapters	4-2
In Case of Difficulty	4-3
Error Messages	4-5
Electrostatic Discharge Information	4-8
Cleaning Connections for Accurate Measurements	4-10
Returning the Module for Service	4-21
Hewlett-Packard Sales and Service Offices	4-24

Reference

Front-Panel Optical Adapters



fpadapt.cdr

Figure 4-1. Front-panel adapters for input and output connectors

In Case of Difficulty

This section provides a list of suggestions for you to follow if the plug-in module fails to operate. A list of messages that may be displayed is also included in this chapter. Before calling Hewlett-Packard or returning the unit for service, a few minutes spent performing some simple checks may save waiting for your instrument to be repaired.

If the mainframe does not operate

- Is the line fuse good?
- Does the line socket have power?
- Is the unit plugged in to the proper ac power source?
- Is the mainframe turned on?
- Is the rear-panel line switch set to on?
- Will the mainframe power up *without* the plug-in module installed?

If the mainframe still does not power up, refer to the optional *HP 83480A, HP 54750A Service Guide* or return the mainframe to a qualified service department.

If the plug-in does not operate

- Is the plug-in module firmly seated in the mainframe slot?
- Are the knurled screws at the bottom of the plug-in module finger-tight?
- Is the clock recovery module set to the modulation rate of the input signal?
- If other equipment, cables, and connectors are being used with the plug-in module, are they connected properly and operating correctly?
- Review the procedure for the test being performed when the problem ap-

In Case of Difficulty

peared. Are all the settings correct? Can the problem be reproduced?

- Are the connectors clean? See [“Cleaning Connections for Accurate Measurements” on page 4-10](#) for more information.
- Perform the following procedures:
 - 1** Make sure that the instrument is ready to acquire data by pressing Run.
 - 2** Find any signals on the channel inputs by pressing Autoscale.
 - 3** See if any signals are present at the channel inputs by pressing Trigger, *Sweep*, *Freerun*.
 - 4** After viewing the signal, press *triggered*.
 - 5** Make sure Channel Display is on by pressing Channel, *Display on off*, *on*.
 - 6** Make sure the channel offset is adjusted so the waveform is not clipped off the display.
 - 7** Make sure the mainframe identifies the plug-in module by pressing Utility, then *System config...*

The calibration status of the plug-in modules is listed near the bottom of the display, in the box labeled “*Plug-ins*”. If the model number of the plug-in module is listed next to the appropriate slot number, then the mainframe has identified the plug-in.

If “*~known*” is displayed instead of the model number of the plug-in module, remove and reinsert the plug-in module in the same slot.

If “*~known*” is still displayed, the mainframe may need to have the latest operating system firmware installed. Options 001 and 002 provide this firmware on a 3.5 inch diskette. To load new firmware, follow the instructions provided with this diskette. If you do not have the optional diskette, contact your local HP Sales and Service Office (refer to [“Hewlett-Packard Sales and Service Offices” on page 4-24](#)).

If the mainframe firmware is current and the plug-in module is correctly installed, then the memory contents of the plug-in module are corrupt. Contact a qualified service department.

Error Messages

The following error messages are for the plug-in module. Typically, the error messages indicate there is a problem with either the plug-in or the mainframe. This section explains what the messages mean and offers a few suggestions that might help resolve the error condition. If the suggestions do not eliminate the error message, then additional troubleshooting is required that is beyond the scope of this book. Additional error messages are listed in the *HP 83480A*, *HP 54750A User's Guide* for the mainframe.

Memory error occurred in plug-in_:Try reinstalling plug-in

The mainframe could not correctly read the contents of the memory in the plug-in.

- Remove and reinstall the plug-in module. Each time a plug-in is installed, the mainframe re-reads the memory in the plug-in module.
- Verify the plug-in module is firmly seated in the mainframe slot.
- Verify the knurled screws at the bottom of the plug-in module are finger-tight.
- Install the plug-in in a different slot in the mainframe.

Busy timeout occurred with plug-in_:Try reinstalling plug-in

Busy timeout occurred with plug-in_:Try reinstalling plug-in

The mainframe is having trouble communicating with the plug-in module. Make sure there is a good connection between the mainframe and the plug-in module.

- Remove and reinstall the plug-in module.
 - Verify the plug-in module is firmly seated in the mainframe slot.
 - Verify the knurled screws at the bottom of the plug-in module are finger-tight.
 - Install the plug-in in a different slot in the mainframe.
-

Communications failure exists at slot_:Service is required

An illegal hardware state is detected at the mainframe-to-plug-in module interface of the specified slot.

- If the slot is empty, there is a mainframe hardware problem. Refer to the *HP 83480A, HP 54750A Service Guide*.
 - If a plug-in is installed in the slot, there is a plug-in module hardware problem. Return the plug-in module to a qualified service department.
-

ID error occurred in plug-in_:Service is required

The information read from the memory of the plug-in module does not match the hardware in the plug-in module. This can be caused by a communication problem between the mainframe and the plug-in module. Make sure there is a good connection between the mainframe and the plug-in.

- Remove and re-install the plug-in module.
 - Verify the plug-in module is firmly seated in the mainframe slot.
 - Verify the knurled screws at the bottom of the plug-in module are finger tight.
 - The standard HP 54750A mainframe does not accept the HP 83491/2/3A Light-wave Clock Recovery Modules module. To use the module, a firmware upgrade
-

Plug-in is not supported: System firmware upgrade is needed

must first be installed. Order the HP 83480K communications firmware kit and install according to the instructions.

- ❑ The HP 83480A, HP 54750A mainframes do not accept plug-in modules designed for use with the HP 54710A, 54720A.

Plug-in is not supported: System firmware upgrade is needed

The mainframe may need to have the latest operating system firmware installed. Options 001 and 002 provide this firmware on a 3.5 inch diskette. To load the new firmware, follow the instructions provided with the diskette. If you do not have the optional diskette, contact your local HP Sales and Service Office.

Electrostatic Discharge Information

Electrostatic discharge (ESD) can damage or destroy electronic components. All work on electronic assemblies should be performed at a static-safe work station. The following figure shows an example of a static-safe work station using two types of ESD protection:

- Conductive table-mat and wrist-strap combination.
- Conductive floor-mat and heel-strap combination.

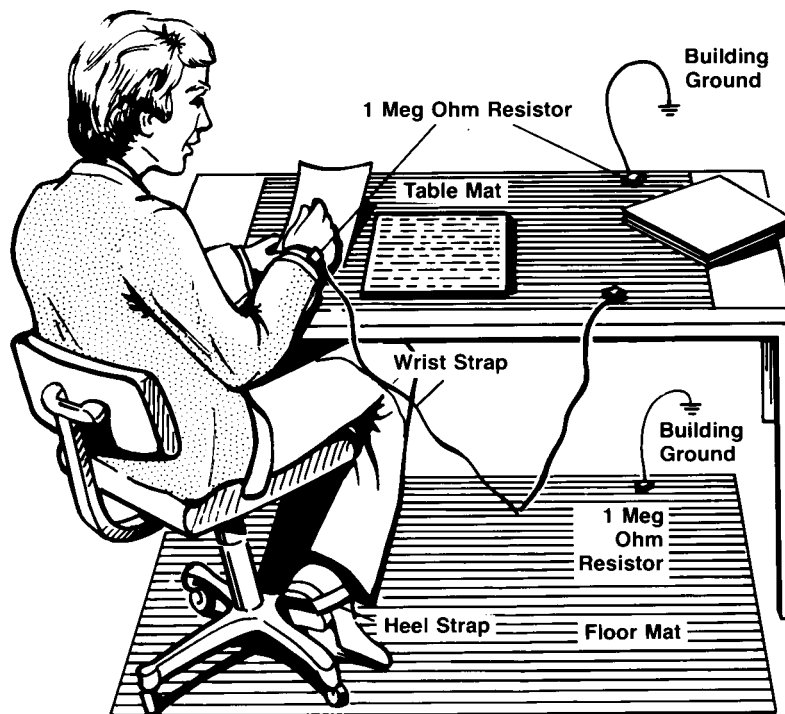


Figure 4-2. Static-safe work station

Both types, when used together, provide a significant level of ESD protection. Of the two, only the table-mat and wrist-strap combination provides adequate ESD protection when used alone.

To ensure user safety, the static-safe accessories must provide at least 1 M Ω of isolation from ground. Refer to Table 4-1 for information on ordering static-safe accessories.

WARNING

These techniques for a static-safe work station should not be used when working on circuitry with a voltage potential greater than 500 volts.

Reducing ESD Damage

The following suggestions may help reduce ESD damage that occurs during testing and servicing operations.

- Personnel should be grounded with a resistor-isolated wrist strap before removing any assembly from the unit.
- Be sure all instruments are properly earth-grounded to prevent a buildup of static charge.

Table 4-1. Static-Safe Accessories

HP Part Number	Description
9300-0797	Set includes: 3M static control mat 0.6 m \times 1.2 m (2 ft \times 4 ft) and 4.6 cm (15 ft) ground wire. (The wrist-strap and wrist-strap cord are not included. They must be ordered separately.)
9300-0980	Wrist-strap cord 1.5 m (5 ft)
9300-1383	Wrist-strap, color black, stainless steel, without cord, has four adjustable links and a 7 mm post-type connection.
9300-1169	ESD heel-strap (reusable 6 to 12 months).

Cleaning Connections for Accurate Measurements

Today, advances in measurement capabilities make connectors and connection techniques more important than ever. Damage to the connectors on calibration and verification devices, test ports, cables, and other devices can degrade measurement accuracy and damage instruments. Replacing a damaged connector can cost thousands of dollars, not to mention lost time! This expense can be avoided by observing the simple precautions presented in this book. This book also contains a brief list of tips for caring for electrical connectors.

Choosing the Right Connector

A critical but often overlooked factor in making a good lightwave measurement is the selection of the fiber-optic connector. The differences in connector types are mainly in the mechanical assembly that holds the ferrule in position against another identical ferrule. Connectors also vary in the polish, curve, and concentricity of the core within the cladding. Mating one style of cable to another requires an adapter. Hewlett Packard offers adapters for most instruments to allow testing with many different cables. The [Figure 4-3 on page 4-11](#) shows the basic components of a typical connectors.

The system tolerance for reflection and insertion loss must be known when selecting a connector from the wide variety of currently available connectors. Some items to consider when selecting a connector are:

- How much insertion loss can be allowed?
- Will the connector need to make multiple connections? Some connectors are better than others, and some are very poor for making repeated connections.
- What is the reflection tolerance? Can the system take reflection degradation?
- Is an instrument-grade connector with a precision core alignment required?
- Is repeatability tolerance for reflection and loss important? Do your specifica-

tions take repeatability uncertainty into account?

- Will a connector degrade the return loss too much, or will a fusion splice be required? For example, many DFB lasers cannot operate with reflections from connectors. Often as much as 90 dB isolation is needed.

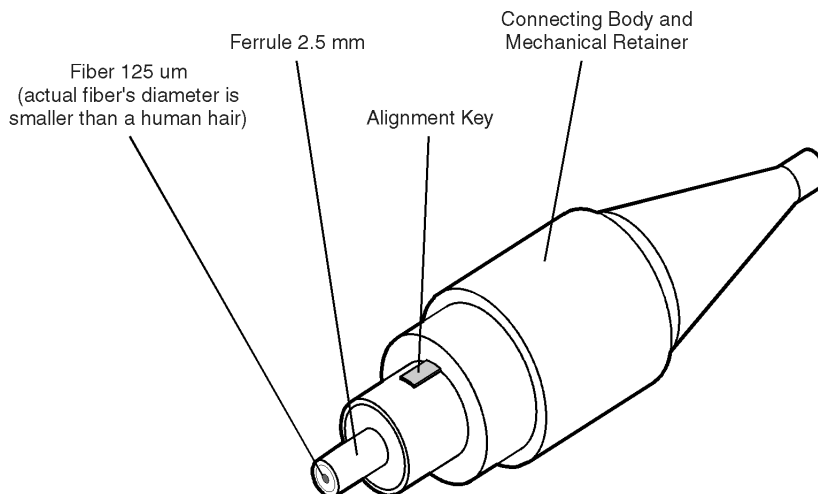


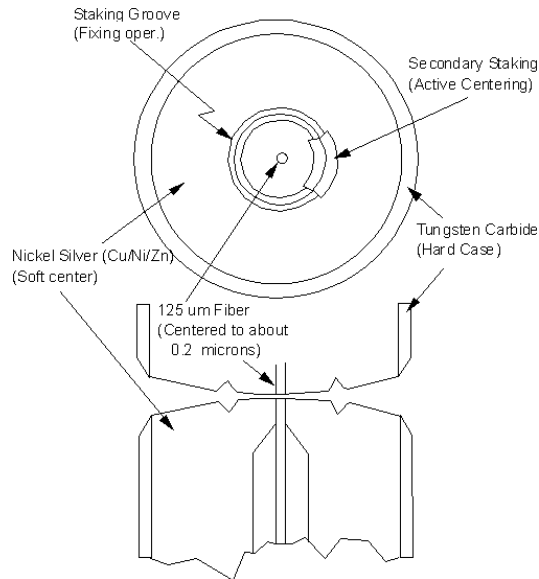
Figure 4-3. Basic components of a connector.

Over the last few years, the FC/PC style connector has emerged as the most popular connector for fiber-optic applications. While not the highest performing connector, it represents a good compromise between performance, reliability, and cost. If properly maintained and cleaned, this connector can withstand many repeated connections.

However, many instrument specifications require tighter tolerances than most connectors, including the FC/PC style, can deliver. These instruments cannot tolerate connectors with the large non-concentricities of the fiber common with ceramic style ferrules. When tighter alignment is required, HP instruments typically use a connector such as the Diamond HMS-10, which has concentric tolerances within a few tenths of a micron. HP then uses a special universal adapter, which allows other cable types to mate with this precision connector. See [Figure 4-4 on page 4-12](#).

Cleaning Connections for Accurate Measurements**Figure 4-4. Universal adapters to Diamond HMS-10**

The HMS-10 encases the fiber within a soft nickel silver (Cu/Ni/Zn) center which is surrounded by a tough tungsten carbide casing, as shown in [Figure 4-5](#).

**Figure 4-5. Cross-section of the Diamond HMS-10 connector.**

The nickel silver allows an active centering process that permits the glass fiber to be moved to the desired position. This process first stakes the soft nickel silver to fix the fiber in a near-center location, then uses a post-active staking to shift the fiber into the desired position within 0.2 μm. This process, plus the keyed axis, allows very precise core-to-core alignments. This connector is found on most HP lightwave instruments.

The soft core, while allowing precise centering, is also the chief liability of the connector. The soft material is easily damaged. Care must be taken to minimize excessive scratching and wear. While minor wear is not a problem if the glass face is not affected, scratches or grit can cause the glass fiber to move out of alignment. Also, if unkeyed connectors are used, the nickel silver can be pushed onto the glass surface. Scratches, fiber movement, or glass contamination will cause loss of signal and increased reflections, resulting in poor return loss.

Inspecting Connectors

Because fiber-optic connectors are susceptible to damage that is not immediately obvious to the naked eye, bad measurements can be made without the user even being aware of a connector problem. Although microscopic examination and return loss measurements are the best way to ensure good connections, they are not always practical. An awareness of potential problems, along with good cleaning practices, can ensure that optimum connector performance is maintained. With glass-to-glass interfaces, it is clear that any degradation of a ferrule or the end of the fiber, any stray particles, or finger oil can have a significant effect on connector performance.

[Figure 4-6](#) shows the end of a clean fiber-optic cable. The dark circle in the center of the micrograph is the fiber's 125 μm core and cladding which carries the light. The surrounding area is the soft nickel-silver ferrule. [Figure 4-7](#) shows a dirty fiber end from neglect or perhaps improper cleaning. Material is smeared and ground into the end of the fiber causing light scattering and poor reflection. Not only is the precision polish lost, but this action can grind off the glass face and destroy the connector.

[Figure 4-8](#) shows physical damage to the glass fiber end caused by either repeated connections made without removing loose particles or using improper cleaning tools. When severe, the damage on one connector end can be transferred to another good connector that comes in contact with it.

The cure for these problems is disciplined connector care as described in the following list and in [“Cleaning Connectors” on page 4-16](#).

Use the following guidelines to achieve the best possible performance when making measurements on a fiber-optic system:

- Never use metal or sharp objects to clean a connector and never scrape the connector.
- Avoid matching gel and oils.

Cleaning Connections for Accurate Measurements

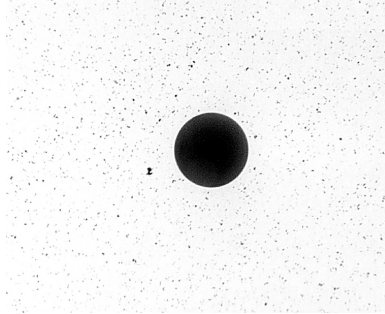


Figure 4-6. Clean, problem-free fiber end and ferrule.

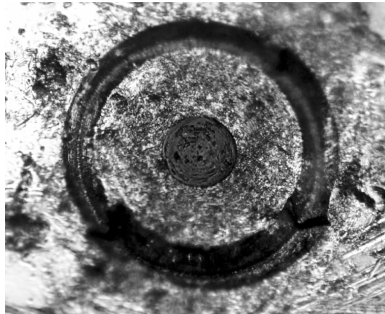


Figure 4-7. Dirty fiber end and ferrule from poor cleaning.



Figure 4-8. Damage from improper cleaning.

While these often work well on first insertion, they are great dirt magnets. The oil or gel grabs and holds grit that is then ground into the end of the fiber. Also, some early gels were designed for use with the FC, non-contacting con-

Cleaning Connections for Accurate Measurements

nectors, using small glass spheres. When used with contacting connectors, these glass balls can scratch and pit the fiber. If an index matching gel or oil must be used, apply it to a freshly cleaned connector, make the measurement, and then immediately clean it off. Never use a gel for longer-term connections and never use it to improve a damaged connector. The gel can mask the extent of damage and continued use of a damaged fiber can transfer damage to the instrument.

- When inserting a fiber-optic cable into a connector, gently insert it in as straight a line as possible. Tipping and inserting at an angle can scrape material off the inside of the connector or even break the inside sleeve of connectors made with ceramic material.
- When inserting a fiber-optic connector into a connector, make sure that the fiber end does not touch the outside of the mating connector or adapter.
- Avoid over tightening connections.

Unlike common electrical connections, tighter is *not* better. The purpose of the connector is to bring two fiber ends together. Once they touch, tightening only causes a greater force to be applied to the delicate fibers. With connectors that have a convex fiber end, the end can be pushed off-axis resulting in misalignment and excessive return loss. Many measurements are actually improved by backing off the connector pressure. Also, if a piece of grit does happen to get by the cleaning procedure, the tighter connection is more likely to damage the glass. Tighten the connectors just until the two fibers touch.

- Keep connectors covered when not in use.
- Use fusion splices on the more permanent critical nodes. Choose the best connector possible. Replace connecting cables regularly. Frequently measure the return loss of the connector to check for degradation, and clean every connector, every time.

All connectors should be treated like the high-quality lens of a good camera. The weak link in instrument and system reliability is often the inappropriate use and care of the connector. Because current connectors are so easy to use, there tends to be reduced vigilance in connector care and cleaning. It takes only one missed cleaning for a piece of grit to permanently damage the glass and ruin the connector.

Measuring insertion loss and return loss

Consistent measurements with your lightwave equipment are a good indication that you have good connections. Since return loss and insertion loss are key factors in determining optical connector performance they can be used to determine connector degradation. A smooth, polished fiber end should pro-

Cleaning Connections for Accurate Measurements

duce a good return-loss measurement. The quality of the polish establishes the difference between the “PC” (physical contact) and the “Super PC” connectors. Most connectors today are physical contact which make glass-to-glass connections, therefore it is critical that the area around the glass core be clean and free of scratches. Although the major area of a connector, excluding the glass, may show scratches and wear, if the glass has maintained its polished smoothness, the connector can still provide a good low level return loss connection.

If you test your cables and accessories for insertion loss and return loss upon receipt, and retain the measured data for comparison, you will be able to tell in the future if any degradation has occurred. Typical values are less than 0.5 dB of loss, and sometimes as little as 0.1 dB of loss with high performance connectors. Return loss is a measure of reflection: the less reflection the better (the larger the return loss, the smaller the reflection). The best physically contacting connectors have return losses better than 50 dB, although 30 to 40 dB is more common.

Visual inspection of fiber ends

Visual inspection of fiber ends can be helpful. Contamination or imperfections on the cable end face can be detected as well as cracks or chips in the fiber itself. Use a microscope (100X to 200X magnification) to inspect the entire end face for contamination, raised metal, or dents in the metal as well as any other imperfections. Inspect the fiber for cracks and chips. Visible imperfections not touching the fiber core may not affect performance (unless the imperfections keep the fibers from contacting).

Cleaning Connectors

The procedures in this section provide the proper steps for cleaning fiber-optic cables and HP universal adapters. The initial cleaning, using the alcohol as a solvent, gently removes any grit and oil. If a caked-on layer of material is still present, (this can happen if the beryllium-copper sides of the ferrule retainer get scraped and deposited on the end of the fiber during insertion of the cable), a second cleaning should be performed. It is not uncommon for a cable or connector to require more than one cleaning.

CAUTION

Hewlett-Packard strongly recommends that index matching compounds *not* be applied to their instruments and accessories. Some compounds, such as gels, may be difficult to remove and can contain damaging particulates. If you think the use of such compounds is necessary, refer to the compound manufacturer for information on application and cleaning procedures.

Table 4-2. Cleaning Accessories

Item	HP Part Number
Isopropyl alcohol	8500-5344
Cotton swabs	8520-0023
Small foam swabs	9300-1223
Compressed dust remover (non-residue)	8500-5262

Table 4-3. Dust Caps Provided with Lightwave Instruments

Item	HP Part Number
Laser shutter cap	08145-64521
FC/PC dust cap	08154-44102
Biconic dust cap	08154-44105
DIN dust cap	5040-9364
HMS10/HP dust cap	5040-9361
ST dust cap	5040-9366

To clean a non-lensed connector**CAUTION**

Do not use any type of foam swab to clean optical fiber ends. Foam swabs can leave filmy deposits on fiber ends that can degrade performance.

- 1 Apply pure isopropyl alcohol to a clean lint-free cotton swab or lens paper. Cotton swabs can be used as long as no cotton fibers remain on the fiber end after cleaning.

Cleaning Connections for Accurate Measurements

- 2 Clean the ferrules and other parts of the connector while avoiding the end of the fiber.
- 3 Apply isopropyl alcohol to a new clean lint-free cotton swab or lens paper.
- 4 Clean the fiber end with the swab or lens paper.

Do *not* scrub during this initial cleaning because grit can be caught in the swab and become a gouging element.

- 5 Immediately dry the fiber end with a clean, dry, lint-free cotton swab or lens paper.
- 6 Blow across the connector end face from a distance of 6 to 8 inches using filtered, dry, compressed air. Aim the compressed air at a shallow angle to the fiber end face.

Nitrogen gas or compressed dust remover can also be used.

CAUTION

Do not shake, tip, or invert compressed air canisters, because this releases particles in the can into the air. Refer to instructions provided on the compressed air canister.

- 7 As soon as the connector is dry, connect or cover it for later use.

If the performance, after the initial cleaning, seems poor try cleaning the connector again. Often a second cleaning will restore proper performance. The second cleaning should be more arduous with a scrubbing action.

To clean an adapter

The fiber-optic input and output connectors on many HP instruments employ a universal adapter such as those shown in the following picture. These adapters allow you to connect the instrument to different types of fiber-optic cables.



Figure 4-9. Universal adapters

- 1 Apply isopropyl alcohol to a clean foam swab.

Cotton swabs can be used as long as no cotton fibers remain after cleaning. The foam swabs listed in this section's introduction are small enough to fit into

adapters.

Although foam swabs can leave filmy deposits, these deposits are very thin, and the risk of other contamination buildup on the inside of adapters greatly outweighs the risk of contamination by foam swabs.

- 2 Clean the adapter with the foam swab.
- 3 Dry the inside of the adapter with a clean, dry, foam swab.
- 4 Blow through the adapter using filtered, dry, compressed air.

Nitrogen gas or compressed dust remover can also be used. Do not shake, tip, or invert compressed air canisters, because this releases particles in the can into the air. Refer to instructions provided on the compressed air canister.

Caring for electrical connections

The following list includes the basic principles of microwave connector care. For more information on microwave connectors and connector care, consult the *Hewlett-Packard Microwave Connector Care Manual*, HP part number 08510-90064.

Handling and Storage

- Keep connectors clean
- Extend sleeve or connector nut
- Use plastic endcaps during storage
- Do *not* touch mating plane surfaces
- Do *not* set connectors contact-end down

Visual Inspection

- Inspect all connectors carefully before every connection
- Look for metal particles, scratches, and dents
- Do *not* use damaged connectors

Cleaning

- Try cleaning with compressed air first
- Clean the connector threads
- Do *not* use abrasives
- Do *not* get liquid onto the plastic support beads

Cleaning Connections for Accurate Measurements

Making Connections

- Align connectors carefully
- Make preliminary connection lightly
- To tighten, turn connector nut *only*
- Do *not* apply bending force to connection
- Do *not* overtighten preliminary connection
- Do *not* twist or screw in connectors
- Do *not* tighten past the “break” point of the torque wrench

Returning the Module for Service

The instructions in this section show you how to properly return the module for repair or calibration. Always call the HP Instrument Support Center first to initiate service *before* returning your module to a service office. This ensures that the repair (or calibration) can be properly tracked and that your module will be returned to you as quickly as possible. Call this number regardless of where you are located. Refer to “Hewlett-Packard Sales and Service Offices” on page 4-24 for a list of service offices.

HP Instrument Support Center (800) 403-0801

If the module is still under warranty or is covered by an HP maintenance contract, it will be repaired under the terms of the warranty or contract (the warranty is at the front of this manual). If the module is no longer under warranty or is not covered by an HP maintenance plan, Hewlett-Packard will notify you of the cost of the repair after examining the unit.

When an module is returned to a Hewlett-Packard service office for servicing, it must be adequately packaged and have a complete description of the failure symptoms attached. When describing the failure, please be as specific as possible about the nature of the problem. Include copies of additional failure information (such as the instrument failure settings, data related to module failure, and error messages) along with the original cal data disks and the module being returned.

Preparing the module for shipping

- 1 Write a complete description of the failure and attach it to the module. Include any specific performance details related to the problem. The following

Returning the Module for Service

information should be returned with the module.

- Type of service required.
 - Date module was returned for repair.
 - Description of the problem:
 - Whether problem is constant or intermittent.
 - Whether module is temperature-sensitive.
 - Whether module is vibration-sensitive.
 - Module settings required to reproduce the problem.
 - Performance data.
 - Company name and return address.
 - Name and phone number of technical contact person.
 - Model number of returned module.
 - Full serial number of returned module.
 - List of any accessories returned with module.
- 2** Cover all front or rear-panel connectors that were originally covered when you first received the module.

CAUTION

Cover electrical connectors to protect sensitive components from electrostatic damage. Cover optical connectors to protect them from damage due to physical contact or dust.

CAUTION

Module damage can result from using packaging materials other than the original materials. Never use styrene pellets as packaging material. They do not adequately cushion the module or prevent it from shifting in the carton. They may also cause module damage by generating static electricity.

- 3** Pack the module in the original shipping containers. Original materials are available through any Hewlett-Packard office. Or, use the following guidelines:
- Wrap the module in antistatic plastic to reduce the possibility of damage caused by electrostatic discharge.
 - For modules weighing less than 54 kg (120 lb), use a double-walled, corrugated cardboard carton of 159 kg (350 lb) test strength.
 - The carton must be large enough to allow approximately 7 cm (3 inches) on all sides of the module for packing material, and strong enough to accommodate the weight of the module.
 - Surround the equipment with approximately 7 cm (3 inches) of packing material, to protect the module and prevent it from moving in the carton. If packing foam is not available, the best alternative is S.D-240 Air Cap™ from Sealed Air Corporation (Commerce, California 90001). Air Cap looks like a

Returning the Module for Service

plastic sheet filled with air bubbles. Use the pink (antistatic) Air Cap™ to reduce static electricity. Wrapping the module several times in this material will protect the module and prevent it from moving in the carton.

- 4** Seal the carton with strong nylon adhesive tape.
- 5** Mark the carton “FRAGILE, HANDLE WITH CARE”.
- 6** Retain copies of all shipping papers.

Hewlett-Packard Sales and Service Offices

Before returning an instrument for service, call the HP Instrument Support Center at (800) 403-0801.

Hewlett-Packard Sales and Service Offices (1 of 2)

U.S. FIELD OPERATIONS

Headquarters

Hewlett-Packard Company
19320 Pruneridge Avenue
Cupertino, CA 95014 U.S.A.
(800) 752-0900

Colorado

Hewlett-Packard Company
24 Inverness Place, East
Englewood, CO 80112
(303) 649-5000

New Jersey

Hewlett-Packard Company
150 Green Pond Road, Dock 1
Rockaway, NJ 07866
(201) 586-5910

California, Northern

Hewlett-Packard Company
301 East Evelyn
Mountain View, CA 94041
(415) 694-2000

Georgia

Hewlett-Packard Company
2000 South Park Place
Atlanta, GA 30339
(404) 955-1500

Texas

Hewlett-Packard Company
930 East Campbell Road
Richardson, TX 75081
(214) 231-6101

California, Southern

Hewlett-Packard Company
1421 South Manhattan Ave.
Fullerton, CA 92631
(714) 999-6700

Illinois

Hewlett-Packard Company
5201 Tollview Drive
Rolling Meadows, IL 60008
(708) 342-2000

EUROPEAN FIELD OPERATIONS

Headquarters

Hewlett-Packard S.A.
150, Route du Nant-d'Avril
1217 Meyrin 2/Geneva Switzerland
(41 22) 780.8111

Great Britain

Hewlett-Packard Ltd.
Eskdale Road, Winnersh Triangle
Wokingham, Berkshire RG11 5DZ

France

Hewlett-Packard France
1 Avenue Du Canada
Zone D'Activite De Courtaboeuf
F-91947 Les Ulis Cedex France
(33 1) 69 82 60 60

Germany

Hewlett-Packard GmbH
Hewlett-Packard Strasse
61352 Bad Homburg Germany
(+49 6172) 16-0

Hewlett-Packard Sales and Service Offices (2 of 2)**INTERCON FIELD OPERATIONS****Headquarters**

Hewlett-Packard Company
3495 Deer Creek Rd.
Palo Alto, California 94304-1316
(415) 857-5027

China

China Hewlett-Packard Company
38 Bei San Huan X1 Road
Shuang Yu Shu
Hai Dian District
Beijing, China
(86 1) 256-6888

Taiwan

Hewlett-Packard Taiwan
8th Floor, H-P Building
337 Fu Hsing North Road
Taipei, Taiwan
(886 2) 712-0404

Australia

Hewlett-Packard Australia Ltd.
31-41 Joseph Street
Blackburn, Victoria 3130
(61 3) 895-2895

Japan

Hewlett-Packard Japan Ltd.
9-1, Takakura-Cho, Hachioji-Shi,
Tokyo, 192, Japan
(81 427) 59-1311

Canada

Hewlett-Packard Ltd.
17500 South Service Road
Trans-Canada Highway
Kirkland, Quebec H9J 2X8
Canada
(514) 697-4232

Singapore

Hewlett-Packard Singapore Ltd.
Pte. Ltd.
Alexandra P.O. Box 87
Singapore 9115
(65) 271-9444

Reference

Hewlett-Packard Sales and Service Offices

Index

A

adapter cable, 1-3, 1-4

B

Bellcore GR-253-CORE, 2-5

block diagram, 2-7

bypass mode, 2-4, 2-5

C

calibration cycle, 3-2

care of fiber optics, 1-2

channel

key, 1-2

setup, 1-2

Channel key, 2-3

characteristics, defined, 3-2

cleaning

adapters, 4-18

fiber-optic connections, 4-10, 4-17

non-lensed connectors, 4-17

CLOCK Auxiliary Output connector, 2-5

clock recovery input connector, 4-21

compensation

HP 54701A active probe, 2-11

insertion loss, 2-9

other devices, 2-11

passive probe, 2-11

compressed dust remover, 4-17

connector

care, 4-10

care manual, 4-19

cotton swabs, 4-17

customer assistance, iii

D

damaged shipment, 1-3

DATA Auxiliary Output connector, 2-5

data rate

indicator lights, 1-5

data rates, 2-2

multiple of, 2-8

declaration of conformity, 3-8

dust caps, 4-17

E

electrostatic discharge, 1-2, 4-8

error messages, 4-5

error performance analyzers, use with, 2-3

ESD

reducing damage caused by ESD, 4-9

static-safe work station, 4-9

extender cables, 1-3

F

fiber

adapters, 4-2

care of, 1-2

cleaning connections, 4-10

connections on HP 83492A, 1-7

connectors, covering, 4-22

multimode, 2-2

reflections, 2-6

single-mode, 2-2

single-mode connections, 2-6

firmware

upgrade kit, 1-2

version required, 1-2

foam swabs, 4-17

front panel, 2-4

adapters, 4-2

features, 2-4

G

GPIB programming, 2-3

green light, 1-5

H

HP 1163A probe, 2-10

HP 54006A low impedance probe, 2-10

HP 54701A active probe, 2-10, 2-11

HP 54750A digitizing oscilloscope, 1-2

HP 83492A

connections, 1-7

maximum input level, 1-5

HP Instrument Support Center, 4-21

HP N1020A TDR probe, 2-10

HP offices, 4-24

Index

I

IEC 1010, [iii](#)
IEC 664, [iii](#)
Input connector, [1-2](#), [1-7](#), [4-10](#)
input connector, [2-2](#)
input signal, maximum safe, [1-5](#)
insertion loss, [2-3](#), [2-6](#)
 compensation, [2-9](#)
INSTALLATION CATEGORY II, [iii](#)
isopropyl alcohol, [4-17](#)
ITU-T G.957, [2-5](#)

M

mainframe troubleshooting, [4-3](#)
maximum input level, [1-5](#)
module
 returning for service, [4-21](#)

O

Output connector, [2-5](#)

P

packaging for shipment, [4-22](#)
plug-in module
 serial number, [1-3](#)
pollution degree 2, [iii](#)
programming, [2-3](#)

R

red light, [1-5](#)
regulatory information, [3-2](#)
responsivity, testing, [1-4](#)
returning for service, [4-21](#)

S

safety information, [iii](#), [1-3](#), [2-3](#)
sales and service offices, [4-24](#)
SELECT key, [1-5](#), [2-4](#)
serial number, [1-3](#)
service, [4-21](#)
 returning for, [4-21](#)
 sales and service offices, [4-24](#)
shipping

 procedure, [4-21](#)
single-mode fiber, [2-6](#)
specifications, [3-2](#)
 defined, [3-2](#)
 HP 83491A, [3-3](#)
 HP 83492A, [3-4](#)
 HP 83493A, [3-6](#)
 operating, [3-7](#)
 temperature range, [3-2](#)
swabs, [4-17](#)

T

technical assistance, [iii](#)
testing, responsivity, [1-4](#)
trigger bypass mode, [2-4](#), [2-5](#)
Trigger On Data light, [2-4](#)
troubleshooting, [4-3](#)

U

Unlocked light, [1-6](#), [2-5](#), [2-8](#)